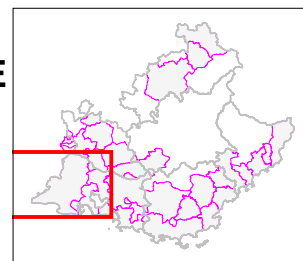


RESSOURCES MAJEURES D'ENJEU DÉPARTEMENTAL À PRÉSERVER POUR L'ALIMENTATION EN EAU POTABLE

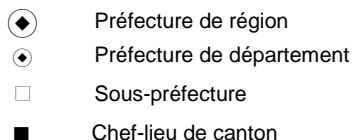
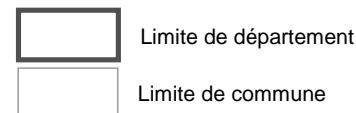
SCOT Pays d'Arles



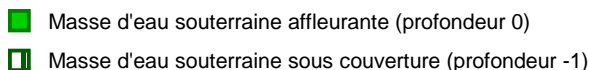
Territoire



Administratif



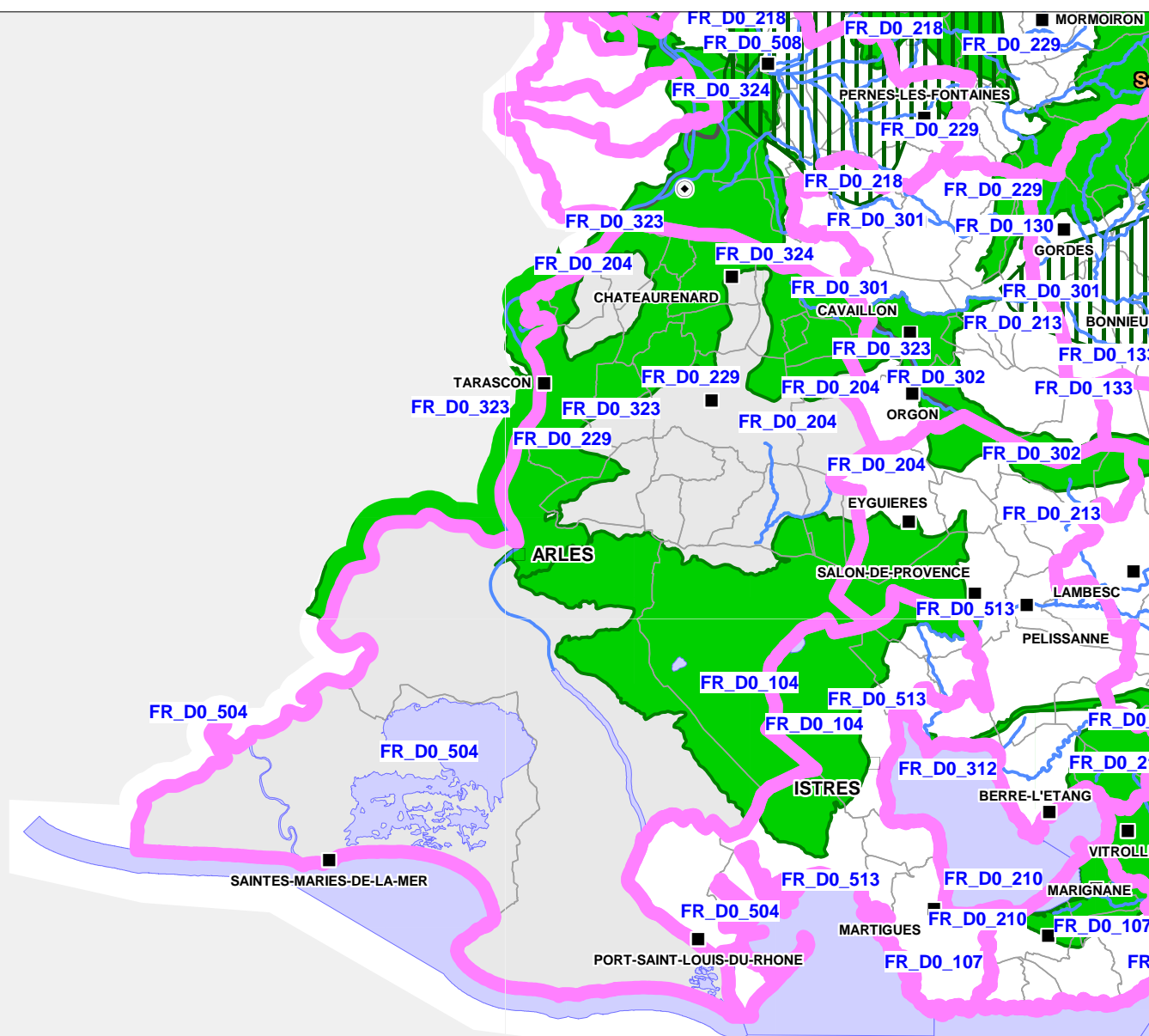
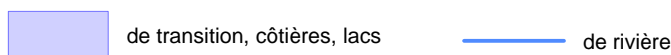
Ressources stratégiques en eau potable



Captages prioritaires



Masses d'eau



0 12.5 25 km